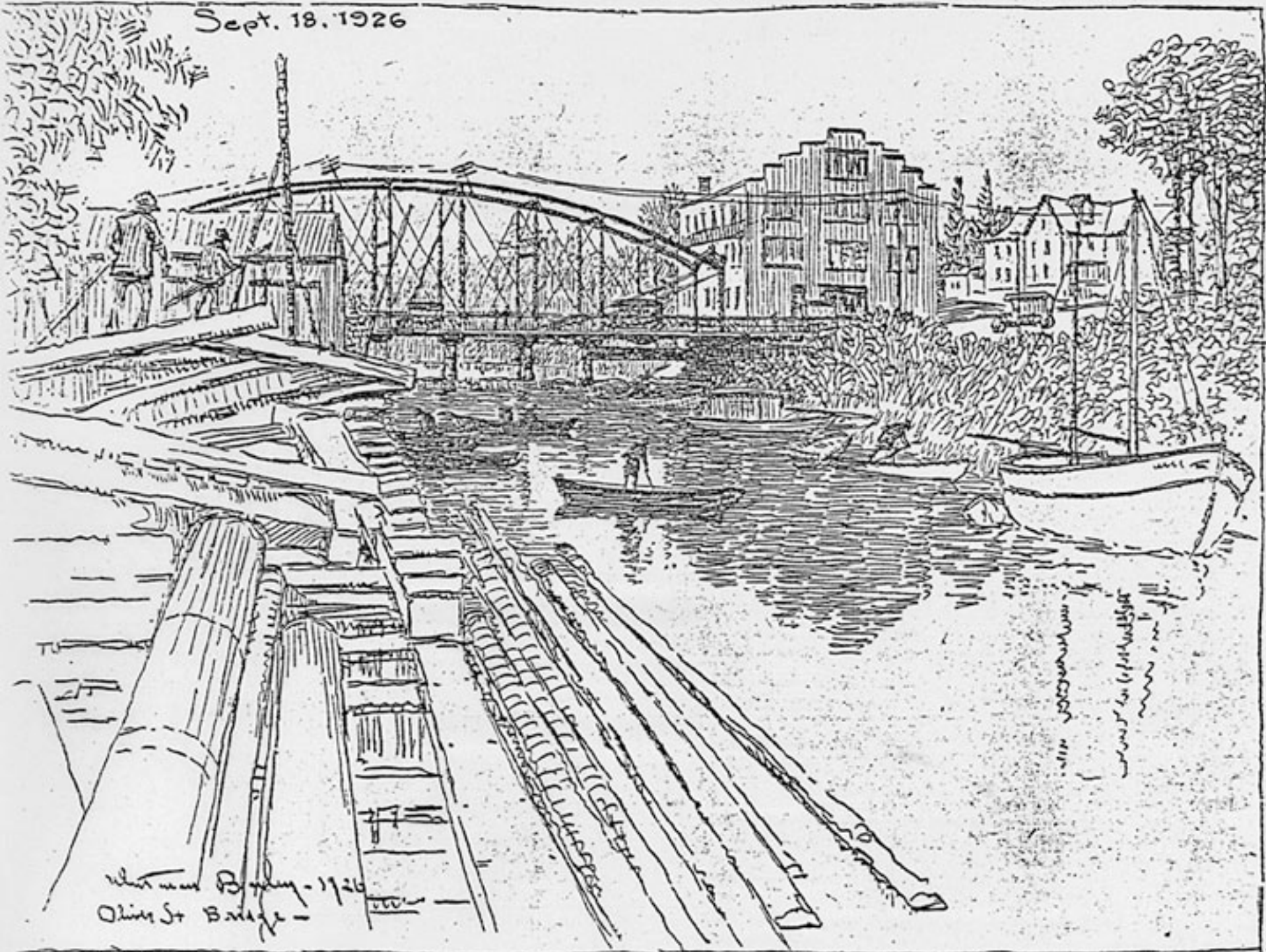


ARTIST'S SKETCH OF OLIVER STREET BRIDGE OVER RIPPOWAM RIVER.

Sept. 18, 1926



The City of Stamford has numerous bridges, which cross the Ripowam River, and every day we find traffic over these structures increasing. This drawing by Mr. [Name] of Oliver Street Bridge gives a scene which is familiar to most of you residing in Stamford, as

many of us going to Sound Beach, and other shore resorts frequently use this span. Although this bridge is not as beautiful in architecture as others in the city, it is situated in a very quaint and picturesque neighborhood, and is near enough to our main West Channel to obtain the surrounding beauty of various small

boats, which are often anchored nearby.

Many changes are now rapidly taking place in this immediate section, and the large building representing the Industrial Dryer Corp., is clearly shown just to the right of the bridge as well as a glimpse of various dwelling houses on Oliver

Street which property not so many years ago was more or less an open field.

The opposite shore visible in the drawing, is now used by the Standard Oil Co., while on the left is shown various coal docks, where many improvements are about to start.